

LUGHURU Heart Book

Cell phone format

GHUMOYO GHWE IMUNU PFAULI



COPYRIGHT

ISBN 978 - 1 - 920322 - 54 - 0

E-MAIL: info@angp.co.za

ALL NATIONS GOSPEL PUBLISHERS
P.O. BOX 2191, PRETORIA, 0001, R.S.A.

(A Gospel Literature Mission financed by donations)
(Reg. No. 1961/001798/08)

GHUMOYO GHWE IMUNU PFAULI

Chitabu chino tsachandikighwa mne isi ya Ufaransa mne ghumwaka 1732. Kuya chomanyika ka "Chioo cha chiroho cha ghumoyo au Chitabu che ghumoyo." Kwaapfila chitabu chino china ukweli wa Ghamaandiko Ghanoghile ghe Imulungu, chandikighwa mne lugha nyingi tsa Ulaya na chosomighwa ne iwanu wa ukulu wose na dini tsose.

Chitabu chino chandikighwa keli na Rev. J.R. Gschwend kwaajili ye iwanu wa Afrika mwaka 1929. Apfo chosomighwa ne iwanu wengi na chowanoghelesa wengi. Na iwanu wengi sideke wawona ukweli wa laghano lye Imulungu lyayalongile mne pfitabu pfake mne Laghano lye Ghumwande, na kutendighwa mne Laghano lya Sambu ka pfailongighwa mne chitabu cha Esekieli 36:26 na Waebrania 8:10 "Nitsomwing'ani ghumoyo ghwa sambu na kwika roho ya sambu mghati mwenu." Lelo wengi mna mwemwe mwodaha ukwimba wila wa sambu; iulonga "Tsakukomighwa, na kwa mlopa wako tsakutukombola na kutuitsa kwe Imulungu, kulawa mne chila kabila, iwanu wose na isi tsose." Ughubulo 5:9.

Lelo pfii ghweghwe myangu! Ambe naghwe kodaha kwilunga mne ukulomba na ukusoma chitabu chino ichidaha kukwapfila, ichimanyika ka "Chioo cha Ghumoyo.

J.R. Gschwend

Copyright ANGP

GHUMOYO GHWE IMUNU

ING'ANDA YE IMULUNGU AU CHIWANDA

CHA SETANI

(Yoh. 3:4-10)

Hausoma chitabu chino uchone ka chioo che ukwilolesa ichidaha kukulangusa ghumoyo ghwako pfauli. Uwe Mkiristu au si mkiristu bae, ka komtoghola Kiristu au ng'umtoghola bae, kutsebona umwenyegho ka Imulungu pfayokona. "Iwanu wolola lukuli lwa kunze, lekeni nene nolola mmoyo." (1 Sam 16:7). Imulungu kotwona ka pfatuli ghendo.

Setani ka aba we ughutsu wose. Yeye ka mndewa we ichisi na mlungu we isi yose, iyetenda imwenyegho ka malaika wa ghumwanga iyowaghala iwamale ne iwapinga mne inzila ihile. Ka pfaikalile ghumwande pfipfila mne ghamatsuwa ghano gha sambu, kuna iwagtumighwa we ughutsu iwetenda iwenyegho ka watumighwa wa Yesu. Chinu chinu si cha ukukangawatsa bae, kwaapfila hata setani imwenyegho tsakeghalusa imwenyegho malaika wa ghumwanga. (2 Wakor 11:13,14). Setani, iyo mlungu we isi yose, koweka mchisi iwanu ili waleke ukona Imulungu pfayowanoghela au waleke ukona ka Yesu tsakafa ili yawakombole

wawo. (2 Wakor 4:4). Iwanu iwotenda nzambi na awala wose ing'awotoghola wafa chiroho na wa pfifita mne mbuli tse Imulungu. Wolongotsighwa na ghehile gha isi yose. (Waef 2:1-2). Ka tsimbutsi tsawo ng'atstifughuka wayone nzila yawo iiwaghitsa, watsakwingila mne ukuhinyighwa kwa ghamatsuwa ghose. Imunu iyolonga, "Sina nitendile nzambi bae" ayo keghutsukila imwenyegho. "Mana Mwana we Imulungu tsakatsa kwaajili ye ichinu acho, kughahinya aghala ghayatendile yehile." (Yoh 3:8). "Kuya mwilapfe muwenyegho kwe Imulungu. Mumleme yehile, naye katsotsuma kutali na mwemwe. Mumtsile Imulungu habehi, naye katsomtsilani habehi." (Yak 4:7,8).

Pfauchisoma chitabu chino na kutsilola ghoya picha tsake, kodaha kuwona ghumoyo ghwako umwenyegho. Umlekele Imulungu yakulanguse ghumoyo wako pfauli. Utsitange nzambi tsako, kuya uleke kulema ka ghweghwe kwahela nzambi, mana mbuli ye Imulungu yotulongela "Tung'alonga twahela nzambi, tweghutsukila iwenyegho na ukweli ng'auli mghati mwetu bae. Ila tung'atsitoghola nzambi tsetu kwe Imulungu, katsokumbuka? laghano lyake na kututendela ghanoghile; katsotuleghusila nzambi tsetu na

kutudeghesa na ghehile ghetu ghose.” (1 Yoh 1:1-10). “Mlopa wa Yesu, Imwanaghe, wotudeghesa nzambi tsose.”

Ghweghwe lamda kolongotsighwa ne Satani au ne Imulungu; lamda ghweghwe kwa mtumwa we nzambi au kwa mtumwa we Imulungu. Ka nzambi tsokutawala uleke kupfisa, ila umlongele Imulungu. Naye katsokutenda uwe huru kubitila Yesu Kiristu iyatsile muisi amu kuwakombola wane nzambi, kutsihinya ngupfu tsa Setani na nzambi itsili mghati mwetu. Yeye ka Imkombotsi wetu. Imulungu Mwenzeluka kotsimanya mbuli tsako tsose, aghala ghautonga ighafisike na aghala ghautenda aku kwefisa. Ng'apfidahika bae kwifisa na kughafisa hambele he Imulungu aghala ghautendile, mana “Imulungu iyatendile ghamaghutwi ghetu, angu ng'odaha bae huhulika? Yeye iyatendile tsinenge tsetu, angu ng'odaha bae ukona?” (Tsab 94:9). “Imtwatsa kololesalosa muisi mwose, ili yaweng'e ngupfu awala wose iwelapfile mimoyo yawo kuna Yeye.” (2 Mbul 16:9).

“Imulungu kololesa chila ichitendighwa ne imunu. Kuduhu ichisi ichidaha kufisa nzambi hambele he Imulungu.” (Ayu 34:21,22).

“Lekeni Yesu tsakakala ng'awatoghole bae, kwaapfila tsakawamanya iwanu wose.” (Yoh 2:24).

Apfo “kabweda ayula iyaleghusilighwe nzambi, ayula iyaleghusighwe matotso ghake. Kabweda imunu ing'ohighighwa ne Imulungu kwa ghamatotso ghayatendile, na kabweda imunu iyalekelighwe kulawa ughutsu wose.” (Tsab 32:1-2).

Copyright ANGP

1. PICHA YA MWANDUSO

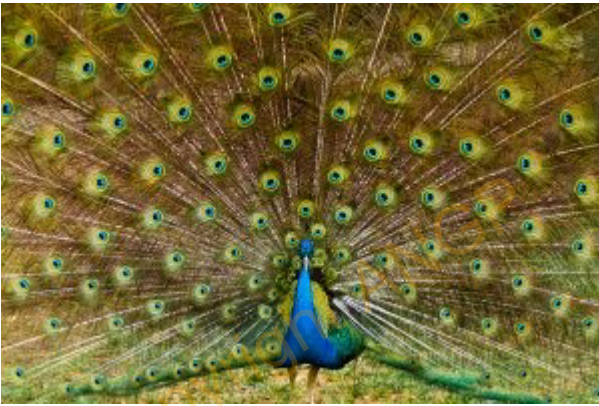


Picha ino yolangusa ghumoyo ghwe imale au ipinga iyotenda nzambi, imunu iyolongotsighwa

na ghehile gha ulimwengu kwa tamaa tsa asili na kusulukila ghendo ighobamighwa ne lukuli. Ghumoyo ghwe imunu wakoneka pfino hambele he Imulungu ka picha pfailangusa. Nenge tsake ndungu na itsikwawa tsolangusa ukupatika kwake ka pfailongighwa mne (Mith 23:29-32); "Tsina nani iwoyowela? Wanu wachi iwakona usungu? Angu tsina nani iwesonga? Na iwosinginika? Angu wanu wachi iwelagha hela? Tsina nani wane tsinenge ndung'u? Uleke kuileka imbwali ikwaghitse, hata ka inogha ng'ani, hata ka yosala mne chipeo, na hata ka yohulumka lughalugha mlumelo. Tsuwa iliwinza nemitondo kwitsebona ka kulumighwa ne inzoka. Nenge tsako tsitsakona pfihulo na ng'utsodaha bae kutonga na kulonga ghoyaghoya."

Hasi mwe litwi mne picha ino, ghumoyo ghwe imunu wakoneka una iwanyama tofwauti tofwauti iwolangusa nzambi tofwauti tofwauti mne ghumoyo ghwe imunu, mana ghumoyo igho hanu ho ukufughila nzambi tsetu. Imulungu kotulongela kubitila mtulandau Yeremiya, (Yer 17:9) "Kuduhu chinu chighutsu ka ghumoyo ghwe imunu, ng'aghudaha bae kuhonetsighwa, imunu ng'odaha bae kughumanya ghumoyo.

Yesu mwenyegho kotoghola chinu chino, hayalongile, "Mana mne ghumoyo ghwe imunu, kolawa mawatso ghehile, utsinzi, ubapfi, ukukoma, dong'o, ubwa, ughutsu, ufisadi, chepfu, maligho, ukwighoda, chidandali na ubwotsi. Agho ghose ghehile gholawa mghati mwe imunu, nagho ghomtenda imunu yehe." (Mark 7:21-23).



1. TAUSI - Kwaapfila tausi kana mighala inoghile ng'ani, naye kwomnoghelesa chila imunu, mne picha ino ye ghumoyo ghwe imunu tausi kotulangusa nzambi yo ukwighoda. Rusiferi tsakakala malaika yanoghile we Imulungu we ghumwanga, tsakaghitsa ukulu wake kwaajili ye ukwighoda, kuya kawa mnebe we Imulungu- ayo iyo yelihe (Isa 14:9-17; Eze 28:12-17).

Chitsowelo che ukwighoda cholawila kutsimu ghendo, ukwighoda kwakoneka mna ipfinu ketseketse. Iwanu wamwenga weghodela utajili

wawo na mali tsawo, ka mighunda na iwamene ne iwang'olo na wamwenga chisomo chawo na wamwenga weghodela ghamaghwanda ghawo na wamwenga weghodela pfihanga pfawo pfinoghile na ng'uli tsawo tsinoghile mbaka wotsilangusa bila chinyala. Wamwenga wobama ukoneka wanogha mbaka woghalusa rangi tsa ng'uli tsawo na wamwenga wesanza sale mpfihanga na mlukuli wakati Imulungu tsakawalumba wanogha, na wamwenga wopfala mikufu na bangili na kutenda pfinu pfimwenga ili woneke wanogha, ka pfayalongighwe mne chitabu cha Isa 3:16-24. Kuya wamwenga weghodela makabila ghawo na isi tsawo na midawalo yawo na ghangi... wosemwa ka, "Imulungu kohila ukwighoda, bali kowanoghela iwahole." (1 Pet 5:5). "Imulungu kohila ukwighoda ne ukwitunya." (Mith 8:13). "Ukwighoda koghala iwanu mne ukuhinyighwa, na chidandali choghala iwanu mna ukughwa." (Mith 16:18).



2. **YUMBWA** - Yumbwa hano kolangusa chitsowelo cha dong'o tse lukuli, unzinzi, ugholi. Nzambi tsino tsolongighwa ka tsongetseka, sambi tsongetseka ng'ani, apfo twotoghola ka Yesu tsakalongesa chayalongile miyaka ka 2000 ibitile, tsakalonga ghamatsuwa gha utsighilo ghatsokuwa ka ghamatsuwa gha Sodoma na Gomora. Chitsowelo chino che nzambi ng'achiwaghoghile iwamale ne iwapinga waliheka bae, na ukwingila mmakaye mwe iwanu wa dini na mmasule na mne tsing'anda tse iwanang'ina, bali nzambi ino ihile na ye ichinyala ingila mmoyo mwe iwanu kwa nzila ing'atsimanyika bae, kubitila senema, midawalo ihile na nzila tsingi ketseketse, chinu acho ichikemighwa nzambi ne Imulungu chakoneka ka chihendo cha sambi. Wasongolo na tsina wali ketseketse wokala ka senema na ka pfitabu pfapfilangulitsa, kuya wakwingitsa iwenyegho

mne ghamaghayo, mne chinyala na mne ukujuta. Iwatenda senema wane chitsowelo chihile wakoneka ka iwanu wakulu kwe lweleko lwa sambu. Tsing'anda tso ukubighila natso tsolangulitsa chitsowelo chihile. Iwanu wakulu we Imulungu iwahenzeluke ka Yosefu (Mwand 39) na wamwenga, ng'awakoneka ka iwanu wa kuighwa mbe. Imulungu kotulongela tuleke kudawala ne ughoni ila tukale kutali nawo Nzambi yoyose yoitenda imunu, koitenda kunze mwe lukuli lwake, lekeni imunu iyotenda ughoni, koutendela ughoni lukuli lwake. "Ng'umanyile bae ka lukuli lwako lwa ing'anda ye Ghumuhe Mwenzeluka iyokala mghati mwako yuwing'ighwe ne Imulungu." (1 Wakor 6:18,19); "Apfo imunu wowose ang'aihinya ing'anda ye Imulungu, naye Imulungu katsomuhinya. Mana ng'anda ye Imulungu yenzeluka, namwe mwa ing'anda yake." (1 Wakor 3:16; 6:15-20).



3. **INGUBI** - Ingubi hano kolangusa nzambi yo ukupatika na nzambi ya ubwa. Ingubi kakuja chochose ichili hambele hake, ng'osaghula bae ichinoghile au ichihile. Kuya hana iwanu wengi iwakuja nyama ye iwanyama iwafile wenyegho. Awo wakung'wa mlopa yalongile Imulungu tuleke ukung'wa. (Gham 15:20). Wamwenga wokwegha tumbaku au sigara, wangi wodafuna tumbaku, kwa ukutenda apfo wotsighela unajisi nguli tsawo. Pfinu apfo pfoghela unajisi na pfoghela sumu mne mlopa wawo na kuwalongotsa mne chitsowela cha nzambi. Setani kowalongotsa wasulukile ukukwegha. Kwa ngupfu ye Imulungu iliheka immale au ipinga wowose kodaha kulapfighwa mne chitsowela chihile ka achi. Wanu wengi wasongolo ne iwanzehe wopfikitsa si chinu bae ukupatika mbwali. Leken i munu wowose iyopatika ng'atsakwingila bae mne Undewa we Imulungu. Mbwali si ichijo bae, ila

choukunywa ichighala lifwa, mbwali yoghalusa ghamawatso ghe imunu. Iwanu iwopatika mbwali wakuwa wabotsi, mana wotenda ughoni, wamwenga wekoma iwenyegho. Wang'aleka ukung'wa mbwali ng'awodaha bae kutenda pfinu apfo. Iwang'wile mbwali wobetsa weyawo, ukupatika koghala ughobo, iyototsa kwa pfinu apfo kahela nzewe. (Mith 20:1). Mne ghamalaghitso gha Musa munu wowose iyakalile ne mwana muasi na iyopatika, imwana ayo kotowighwa ghamabwe mbaka yafe. (Kumbu Iya Gha 21:19-21). Iwanu iwotenda mbwali yoyose nawo wototsa ka awala iwoghutsa na iwakung'wa imbwali kwaapfila Imbuli ye Imulungu yolonga; Watsoghaya iwanu iwodaha ukung'wa mbwali ng'ali, iwamale wane ngupfu iwohanganya tsimbwali. (Isay 5:22). "Katsoghaya imunu iyomwing'a miyaghe imbwali, ghweghwe yumghela isumu yako, na kumtenda miyagho yapatike." (Habak 2:15). Mleke kwichutsukila, waghoni na iwotamanila pfinyagho, wala wanzinzi, wala iwowasa ne iwamale weyawo, wala wabapfi, wala iwosulukila pfinu pfa weyawo, wala IWANU IWOPATIKA, wala iwanu iwoligha, wala iwanu iwoboka weyawo, wose awo ng'awatsokwingila bae mne Undewa we Imulungu. (1 Wakor 6:9-10).

Apfo ghamatendo gha lukuli gha mwatsi ghendo. Nagho igho ghano, ughoni na ukwiha na unebe na ung'enye na kutamanila pfinyagho, uhawi na ughobo na chepfu na maya, na fitina na faraka na ukubangitsila na husuda na UKUPATIKA na UBWA, na ghangi igheghala na ghano. Wanu iwotenda ghano ng'awatsakwingila bae mne Undewa we Imulungu. (Waga 5:19-21). Kuya mleke kupatika mbwali, mana ina ufisadi, ila mmemesighwe Ghumuhe. (Waef 5:18). Yesu iyali ne imbwibwi ye ughima kowakema pfino iwanu wane ng'ilu; "Imunu yane ng'ilu yatse kuna nene yang'we hela ghamatsi ghe ughima." (Yoh 7:37-38).

"Haya lelo, iwanu yamli ne ng'ilu, mtse mne ghamatsi,

Namwe iyamli hela tsisendi, mtse mghule ipfijo mje;

Mtse mghule dipfai na matombo,

Bila isendi, bila chinu;

Ebali kulapfa sendi kawaajili ye ichinu ichili si chijo bae? Na isendi kwaajili ya chinu ing'achighutisa bae?" (Isay 55:1-2).



4. **KOBE** - Mnyama yuno, iyoghenda lughalugha, keghala na nzambi ya udebwe, nzambi yo ukukawa na ye uhawi. Imunu mdebwe kakughwa mne maghetso mengi. Konoghela ukwiba kubita kutenda sang'ano. Kuya ubapfi wodaha kumtenda yakome imunu ili yadahe ukwiba. Ubwede wa ghumuhe wotughoma tuleke kulomba, tuleke kusoma Imbuli ye imulungu (Bibilia) kuya tuleke kughenda kanisani. Ubwede uno wotungoma tuleke kuisoma pfinoghile Mbuli ye Imulungu iili ne ughima wa ghamatsuwa ghose. Ukukawa, pfipfila ubapfi wa muda, kuya wolongotsa mbaka mne ukuhinyika. Imulungu ang'alonga naghwe umwinge ghumoyo ghwako leloli, Setani kakutsa himahima kokulongela ukawe mbaka ilupfi ebu litsuwa lingi, na tsuwa alyo ng'alikutsa ng'o. Lamda kutsoghendelela kukawa kulawa litsuwa limewe mbaka litsuwa lingi, ghumwaka mbaka ghumwaka ghungi na

baho lifwa litsokutsila bila ukummanyana Imulungu, bila ukukombolighwa, na bila Kristu. Apfo Imulungu kolonga: "Leloli ka mtsohulika litsi lye Imulungu mleke kuitenda mimoyo ghenu kuwa mikomu." (Waeb 3:7-8).

Ghamba lya kobe lyotumiwagha ne iwaghanga, apfo lyeghala na nzambi ye ukutoghola ughanga na ukutenda uhawi, na kuleka ukumhuila Imulungu iyali mghima. Iwanu hawoghanzika woleka kumlomba Imulungu iyali mghima, wohuila hiritsi, mitsitsi, ghamabwe, tsimembe au pfinu pfingi ing'apfilihela ughima pfaweng'ighwe ne imghanga. Mwobamighwa mumtoghole ayula iyawalumbile na mkombotsi wenu. Imulungu tsakawalaghitsa Waisiraeli, tsakalonga, "Mleke kumleka pinga mhawi yakale." (Kul 22:18). Kuna mwemwe aleke ukoneka imunu iyotoa bau, wala imunu iyolola pfipinfi pfihile, wala imunu iyolaghula. Mana imunu iyotenda ghano keha hambele he Imtwatsa. (Kumb 18:10-12). Mleke kuwaghendela iwolaghula mitsimu wala wahawi ili wawalaghulile na apfo kwitenda wenyegho mwihe. Nene iyo Imtwatsa Imulungu, Imulungu wenu. (Walawi 19:31). Na imunu yula iyowaghendela walaghutsi na wahawi ili yatsini nawo, nitsomlola ghendo na kumbaghula kutali

ne iwanu wake. Mwideghese lelo, muwe wahenzeluka mana nene iyo Imulungu Imtwatsa wenu. (Walawi 20:6-7). Yesu Kristo iyo iyohotsa muhe, nafsi na lukuli. Yeye kotuleghhusila nzambi tsetu tsose na kutuhonetsa matamu ghetu ghose. (Tsaburi 103:1-3). Ka hana munu iyoghula mghati mwenu, yawakeme wabala wa kanisa (si mghanga bae) nawo wamlombele na kulomba kwawo kwa inoghola kutsomkombola mtamu ayo. Imtwatsa katsomwinula, ka tsakatenda nzambi, katsoleghusighwa nzambi tsake. Mtubu nzambi tsenu mwemwe kwa mwemwe na mwilombele ili muhonetsighwe. (Yak 5:14-16).

Hausoma chitabu chino chidodo, ukumbuke ka Imulungu kolonga naghwe na kokulongela utubu nzambi tsako na umwing'e Yeye ughima wako wose. Leken i ghumoyo ghwako iwighala na kobe wokunong'onetsa wokulongela, "Uleke kutsumka, beta tanu, kodaha kutenda apfo ilupfi, au juma ilikutsa au ghumwaka we ilupfi. Mlongele mmale wako tanu, mlongele mwehe wako tanu au aba wako au leka tanu uwengitse ngoma iwanagho." Kuya koleka kuhulikitsa litsi lye Imulungu, kohulikitsa litsi lye ughutsu lya Setani. Kwa

kutenda apfo koutenda ghumoyo wako ghuwe nkomu, wakuwa mkomu ka ghamba lya kobe.



5. **CHUI** - Chui ka mnyama mkali ng'ani iyosulukila kumwagha mlopa. Keghala na maya na chuki iili mmoyo mwe imunu. Munu wowose iyolongotsighwa na chuki na maya, kodaha kutenda ghehile, kodaha kulongotsighwa kutenda ukatili au ukulighita au hata ukukoma. Imunu ang'apatika mbwali yakoneka ka kang'wa muhe we Bilisi, mana ng'odaha bae kwilongotsa imwenyegho. Waogha wengi wakung'wa mbwali sideke ili walapfe wogha, wadahe kutenda ghehile au kuliha chisasi ichili mmoyo. "Imbwali yawo sumu ya matsoka, usungu mkali wa nzoka." (Kumb 32:33). Kisasi chamta kwe ghumoya ghune nzambi, ila Imulungu iyo iyoliha chisasi. Yesu tsakalonga; "Muwanoghele wanebe wenu." Imulungu kolonga katsotuleghusila nzambi tsetu

ka towaleghusila awala iwotutendela ghamatotso.



6. NYOKA - Chilumbe chino ghumwande tsachikala chinogha sideke. Lekeni tsakawabugha Adamu na Eva mne bustani ya Edeni ili awatende wawo wesonge ne Imulungu. Setani tsakona chepfu hayonile Imulungu pfayowanoghela immale ne ipinga wa mwanduso. Kuya tsakawonela chepfu hawekighwe waitawale iisi yose. Kwaajili ya chepfu, Setani tsakalamla yauhinye usale yawile nawo Imulungu na Iwanu. Tsakatenda apfo. Chepfu chino che lipfa chammoyo mwako na cholongotsa ughima wako, kuya chokutenda uleke kudeng'elela haukona iwanu wangi wodeng'elela na kukala pfinoghile. Hata Wakristu iwomsang'anila Imulungu, welangitse na chepfu cha Setani, hata hala Imulungu ang'amtumila munu yungi na kumotetsa kubita ghweghwe.

Chepfu choghela mmoyo mwako mbuli nyingi tsihile ili uwaloghe iwanu wangi na uhinye ukudeng'elela kwawo na kuwakoma awala yuwonela chepfu. Chepfu ichili mghati mwa immale na pinga wake chodaha kuihinya ng'anda yawo na maisha ghawo. Chepfu chikali ka Jehenamu. (Wila unoghile 8:6).



7. **CHIBUTWA** - Chibutwa kolilagha mne lidongo au mmatsi. Keghala ne nzambi ya ubwa au nzambi ye ukunoghela ng'ani tsendi na tsimali, nzambi ino iyo sina lya ukwiha kwose. (1 Tim 6:10). Mne isi ya Kongo hana pfiutwa wamwenga wakuja mswa mbaka wotulika na wakufa baho. Munu mbwa ng'otoghola bae kumwing'a munu yungi achila chayalinacho au kuweng'a wahingwa mali tsake tsingi. Kotenda ka pfayodaha, pfinoghile au kwa ughutsu, kokunga mali tsa iisi ino itsihinyika, itsijighwa

ne wanondo, itsikinda kutu na itsikwibighwa ne iwabapfi. Imtwatsa Yesu kotulongela twike hatsina tsetu kulanga, ako kuduhu wabapfi iwobena no ukwiba. Mana kuili hatsina yako, baho ghumoyo ghwako ghwabao. (Mat 6:19-21). Akani na kaye yake tsawakomighwa kwaapfila tsawanoghela nzahabu, fetsa na maghwanda gha bei ng'ulu. Apfo tsakasola achila ichilighitighwe. (Yosh 7).

Yuda Isikarioti, mwanang'ina wa Yesu, tsakafa kwaajili ya ukunoghela ng'ani tsendi kubita pfayang'ali yomnoghela Imtwatsa Yesu. (Mat 27:3-5).

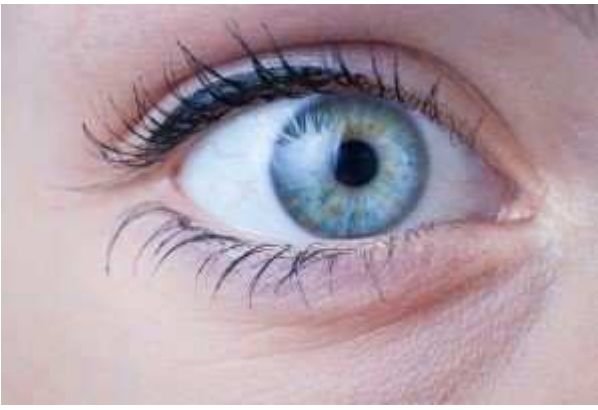


8. **SHETANI** - Setani aba wa waghutsu wose na awala iwotenda ughutsu. Yeye ka mdimi we iwanyama wose na koilongotsa imimoyo yawo. Yesu tsakalonga: "Mwemwe mwa iwana we setani na tamaa tsa aba wenu tsitso

itsimnogheleni kutsitenda. Yeye tsakakala kokoma iwanu kulawa mwanduso, wala ng'ana kweli bae mghati mwake. Holonga ughutsu kolonga gha kwake imwenyegho kwaapfila yeye mghutsu na aba wa ughutsu." (Yohana 8:44).



9. **SINONDO** - Tsinondo tseghala na ghumoyo ghwa chila imunu. Ahano ghumoyo ghuwa mtitu kwa ajili ya nzambi tsa chitsowelo. Ng'aghudaha kutenda sang'ano yake pfinoghile. (Timoteo 4:2).



10. **NENGE** - Inenge ya Imulungu ya hanu hohose na yakwona chochose ichili mghati mwe ghumoyo ghwe imunu. Kuduhu chinu chochose ichipfisika hambela he Imulungu. Apfo Imulungu komanya na kakona pfose ipfipfisike mmoyo na achila ghumoyo chaghubama kutenda. Ka kotenda ghamatendo ghehile mne chisi, mne ghumuhulo na hanu hohose, Imulungu kakona.



11. **MALAIKA** - Malaika weghala ne imbuli inoghile ye Imulungu. Imulungu kolonga ne imunu yane nzambi na komlongela yaleke nzambi na yaleke ghumwanga ghwe Imulungu ghwingile mna ghumoyo ghwake. Pfipfila Imulungu kolonga na ghweghwe, yusoma chitabu chino.



12. **NJIWA** - Njiwa chideghe yofughighwa na ng'otenda chinu chochose chihile kwe munu au kwe chinu chochose. Chideghe yuno pfayali ka Ghumuhe Mwenzeluka, Muhe wa kweli yololesa nzambi na haki ya kuhighighwa. Mne picha Ghumuhe Mwenzeluka ka kunze mwa ghumoyo; ng'odaha kukala hanu hane nzambi bae.



13. MILAMBI MIDODO YE GHUMOTO -
Milambi ino yotsunguluka ghumoyo ghwe munu
ghune nzambi, yeghala na unoghelo we Imulungu
pfauutsunguluka ghumoyo ghwe imunu yane
nzambi. Imulungu ng'obama imunu yane nzambi
yafe ila kobama yaleke nzambi na yawe
mghima. Yesu tsakatsa kukombola iwanu wane
nzambi. Kwakuwa na ndeng'elo ng'ulu ako
kulanga kwaajili ye imunu yane nzambi kuleka
nzambi. Imulungu kobama kutenda ghumoyo
ghwako ghunoghe kwa mlopa wa imwanaghe
nyalimwe, Yesu Kirisito. Unoghelo we Imulungu
wobama kwingila mghati mwe ghumoyo ghuholile.

Yesu kakwima halibani ha ghumoyo ghwako
koghong'onda. Ung'ampfughulila katsakwingila na
katsoghutenda ghumoyo ghwako ghunoghe na
katsokukombola.

2. IPICHA YA KELI



Ipicha ino yolangusa imunu yakwandusa kuleka nzambi na kumuwinza Imulungu. Malaika we

Imulungu kokinda lipanga, lipanga alyo iyo imbuli inoghile ye Imulungu ine ughima, ine ngupfu kubita lipanga lyolyose ilikana kosekose. Mbuli inoghile ye Imulungu yohoma na yodaha kabaghula nafsi, muhe na pfilungo na ghamafuta ighali mghati mwake, pfipfila yodaha kumanya ghamawatso na ghumoyo cha ghubama kutenda. (Waeburaniya 9:12). Imbuli inoghile ye Imulungu yotukumbusha ka maliho gha nzambi lifwa. Imunu kekilighwa ukufa mara imwe na ang'afa baho kohighighwa. (Waeburaniya 9:27). Kaye ye imunu yane nzambi na yang'otoghola Kiristo itsakuwa mne litsiwa ilikwaka ghumoto ghwe chibiriti.

Mna ghumwoko ghwa keli, malaika we Imulungu kakinda bombwe lya litwi, bombwe alyo lyolangusa imipate inyalile ye litwi. Chinu chino chomkumbusha munu yane nzambi ka twetwe wose tutsakufa. Hata ka twotsinoghela ng'ani ng'uli tsetu na twotsipfatsa ghamaghwanda na ukuja ichijo na kutsing'a nguli tsetu chatsibama, lekeni tsitsakufa na tsitsakola. Membele watsauja ulukuli na Muhe utsopfika hane chighoda cha kuhighighwa che Imulungu. Yane nzambi kakwandusa kuhulika Imbuli inoghile ye Imulungu iighoma na kopfughula ghumoyo

ghwake kwa unoghelo we Imulungu. Ghumuhe Mwenzeluka kakwandusa kung'ara mghati mwa ghumoyo ghune chisi. Ghumwanga ghwe Imulungu ghwakwingila na ghwakwandusa kuwina ichisi chose. Hanu hane ghumwanga, chisi chotsuma. Unoghelo unoghile we Imulungu ulamsa ghumoyo ighuholile. Nzambi iighalile ne iwanyama tofwautitofwauti iwingighwa itsuma. Ghwe imunu yune nzambi mtoghole Yesu iyali ghumwanga ghwe isi yengile mna ghumoyo ghwako. Yang'engila, baho ichisi ne ghamatendo ghe chisi ghatsolawa mna ghumoyo ghwako. Ka pfaukona mne picha ino Yesu kolonga, "Nene na ghumwanga ghwe isi, ayula iyoniwinda nene ng'atsoghenda ghendo kune chisi." (Yohana 8:12). Watsoghaya iwanu iwonoghela ichisi kubita ghumwanga. Yesu hengile Yerusalemu tsakawawinga wose iwang'ali woutsa ng'ombe, wiang'olo ne wanjwa. Kakutula tsendi tsa awala iwang'ali woghalusa tsendi kuya kalonga, "Ing'anda yangu itsokemighwa ing'anda ye ukulombela, lekeni mwemwe muitenda ka mango ye iwanu iwoboka." (Matayo 21:12-13). Ing'anda ghumoyo ghwako. Yesu ng'atsile ili yatulegusile nzambi tsetu tsiliheka, ila tsakatsa kutukombola kulawa kune ngupfu ya nzambi utawala wa nzambi. Lelo imwana

ang'amlekeleleni, mtsolekelighwa kweli kweli.
(Yohana 8:36).

Copyright ANGP

3. IPICHA YA KADATU



Mne ipicha ino twakona ghumoyo ghwe imunu
yane nzambi pfayalekile ghendo nzambi.

Kohulika na kakwona ukulu na utsito wa nzambi tsake itsili nyingi, kwa nzambi atso Yesu tsakawambighwa mna msalaba. Ghumoyo ghwa munnu yane nzambi ghobeneka ang'ona Imbuli inoghile ye Imulungu yomghubulila. Unoghelo we Imulungu tsawoneka kuna Yesu Kirisito, unoghelo uno wotenda moyo ghwe imunu ghuleghele hayokumbuka ka Yesu Kirisito tsakatsa kutsileghusa nzambi nyingi. Tsakatoghola yafe mna msalaba badala yake. Yolongighwa ghendo Yesu tsakatowighwa pfiboko, tsawampfatsa tsimiwa, tsawamkomelela imisumari mna ghamoko na mna ghamaghulu, tsakafa mna msalaba kwaajili ya nzambi tsetu. Mbuli ino iyo iimtenda imunu yane nzambi yaleke kuwa na ngupfu. Hayosoma Imbuli inoghile ye Imulungu na kuimanya, kebona mne chioo che Imulungu; komanya ghumoyo ghwake pfaghuli mne chisi che nzambi. Ghumoyo ghwake ghohomighwa ne usungu. Usungu womtenda yalile kwa ajili ya nzambi tsake, na Imulungu komsoghelela habehi. Unoghelo we Imulungu na tindiwalo lyake pfakwingila mne ghumoyo ghwake, ighudeghesighwe kwa mlopa wa Yesu Kirisito, ili nzambi tsake tsose tsileghusighwe. Kakwandusa kumanya ka Imtwatsa ka habehi na awala iwabeneke imimoyo, na kowakombola

awala iwabama kumbokela. (Zaburi 34:18).
Kowahonetsa awala iwombokela na kohonetsa
pfilonda pfawo. (Zaburi 147:3). Pfipfila mbuli
inoghile ye Imulungu yolongu, Imunu yuno yuyo
yanitsomlolesa, imunu yobama kunibokela
yoghudema hahulika imbuli yangu inoghile.
(Isaya 66:2).

Ghumuhe Mwenzeluka na unoghelo we Imulungu
pftawala ghumoyo ghunoghile. Ighulola msalaba
kwa inoghola ne ighulola mlopa wa Yesu,
ighwitike kwa ajili ya kulapfa nzambi tsetu,
imunu yuno kakwandusa kumanya ka nzambi
tsake tsileghusighwa. Lelo komanya ghendo mna
ghumoyo ghwake ka mlopa wa Yesu, imwana we
Imulungu ghuleghusa nzambi tsake tsose. (1
Yohana 1:7). Yeye yomtoghola Yesu
ng'atsakwagha bae, lekeni katsakuwa mghima
matsuwa ghose. (1 Wakorinto 6:10,11). Mna
Yesu tunawo ukombotsi wa mlopa wake, na
kuleghusighwa nzambi, ka uluso wake pfauli
mkulu. (Waefeso 1:7). Lelo munu ayo kana
muhe wa sambu mna ghumoyo ghwake na ipfinu
pfe isi ino ng'apfimmoghela ila kosulukila pfinu
pfe Imulungu, iyammemetse unoghelo ghumoyo
ghwake. Iwanyama wa kunze mwe ghumoyo
ghwake, yani nzambi tsake. Hata ka setani

imwenyegho ng'apfimmoghela bae ukuka, kuya yang'ali yolola kuchugho na kosulukila yengile keli mna ghumoyo agho. Apfo tulongelighwa tukale meso tulombe, tumleme setani naye katsotsuma.

Copyright ANGP

4. IPICHA YA KANE



Ipicha ino yeghala na mkiristu yapatile tindiwalo na ukombotsi iwenele mna nambiko ya Mtwatsa

na Mkombotsi wetu Yesu Kirisito. Apfo ng'eghodela chinu chochose bae ila msalaba ghwa Yesu Kirisito, kwa msalaba agho iisi iwambighwa kuna yeye na yeye kawambighwa kuna isi. (Wagalatia 6:14). Komanya ghendo ka Yesu tsakafa mna msalaba ili twetwe tufe kwa mbuli tsa nzambi, kuya tuwe waghima kwa mbuli tsa haki. (1 Petiri 2:24). Mkiristu kowambighwa kwe iisi ino. Tulaghitsighwa tughughendele ghumuhe wala tuleke kutimitsa ghendo usulukilo wa lukuli. (Wagalatia 5:13-25). Kuya tulongelighwa tuubame ghendo wenzeluka, mana bila awo kuduhu yatsomwona Mtwatsa. (Waeburaniya 12:4).

Ipicha ine ghumoyo ghuno kodaha kwona tsingutso tsohighwe Yesu na tsipingu baada ya kutsulighwa ghamaghwanda ghake. Kodaha ukwona itsimiwa tsawamtowele kwa ajili ya chipigo ichibamighwe tutowighwe twetwe, lekeni chimghwila yeye. (Isaya 58:11,12). Tsakatowighwa kwa ajili ya nzambi tsetu. Mndewa Herode ne iwanu wake tsawambetsa na hawamalitse kumtowa Yesu ne pfiboko pfe tsimiwa, wampfatsa ghwanda dung'u. Watenda taji lya tsimiwa wampfatsa mwitwi, badala ya kumpfatsa taji lya nzahabu. Tsaweka ghumlanzi

mna ghumwoko ghwake ghwa kujilo badala yo ukwika ng'weku ya chindewa. Watowa ghampfindi hambele hake, wambetsa walonga, "Twokulamsa mndewa wa Wayahudi!" Kuya wamtemela ghamate, wasola ghumlanzi ghula wantowela mwitwi. Hawamalitse kumbetsa wamsola ili wamuwambe. Kuya wabaho iwanu iwokemighwa wakirisito na woghenda kukanisa, wakuja imetsa ye Imtwatsa, womwimbila Imulungu, lekeni ghamatendo ghawo ghehile ghomuwamba keli mkombotsi wawo. Si wose bae iwolomba no ukulonga Mtwatsa, Mtwatsa iwatsakwingila mne undewa we Imulungu, lekeni awala iwotenda chobama Imulungu iyali kulanga. (Matayo 7:21-27). Mne ipicha ino kodaha ukwona ghumfuko ghwa fetsa. Yuda tsakamuutsa Yesu kwa pfihindi selasini pfa fetsa, kwaapfila tsakatsinoghela ng'ani tsifetsa na tsifetsa tsatsitawala ghumoyo ghwake. Wang'ewele tsawatumila itaa na iminyororo kutowela simbi ghamaghwanda ghake ili Imbuli iyalongile Imulungu itimile. "Wegholela maghwanda ghangu, na ghwanda lyangu wolitowela simbi." (Zaburi 22:18).

Bahala ing'ewele hamuhomile mghowa Yesu mlubapfu, ghumlopa ne ghamatsi tsaghalawa.

(Yohana 19:33-37). Ng'ana joghola yeke Petiri kabela hambele he mtumwa ka ng'ammanyile bae Yesu. Apfi ghweghwe kotoghola ghendo ka kumwing'a Yesu Kirisito ghumoyo ghwako kwa achila chulonga na chutenda? Au kopfuka kutenda apfo? Yesu kalonga, "Lelo chila imunu iyonitoghola hambele he iwanu, Nani nitsomtoghola hambele ha aba wangu yali kulanga." (Matayo 10:32,33). Kuya tsakalonga, "Imunu wowose yobama kuniwinza yeleme imwenyegho, yasole msalaba wake yaniwinze. (Matayo 16:24). Wala imunu yang'osola msalaba wake yaniwinze ng'otenda pfanibama nene. (Matayo 10:33).

Bambalawe ilinoghile, Kuna ghweghwe
nitsepfisa,

Ghamatsi ne mlopa, Ighalawile mno,
Pfonileghusila nzambi, Pfonitenda nihume.

5 IPICHA YA SANO



Ipicha ino yolangusa ughima iudeghesighwe, na imunu yane nzambi pfayakombolighwe kwa uluso

na libatsi lye Imulungu kawa ing'anda ya kweli ye Imulungu. Kaye ye Imulungu, Aba, Imwana na Ghumuhe Mwenzeluka; ka pfallongile Imtwatsa Yesu, "Imunu yang'aninoghela nene katsokinda Imbuli yangu inoghile na Aba wangu katsomnoghela, na twetwe tutsakutsa na kukala naye." (Yohana 14:23). Kubitila Yesu Kirisito Imulungu kamotetsa imunu no ukumwinula. (Luka 1:52).

Lelo ghumoyo ghuwa ing'anda ye Imulungu iyali mghima. Nzambi tsileghusighwa. Badala ya iwanyama tofwauti tofwauti iwalogotsighwe na setani, aba wa ughutsu, twomona Ghumuhe Mwenzeluka mna ghumoyo. Badala ya ghamatendo ghehile, lukuli lwakuwa ka mghunda ghune mbiki ighulapfa ghamatunda ghanoghile gha Ghumuhe. Gholapfa ghamatunda ka; unoghelo, ndeng'elelo, tindiwalo, wenyepfale, ukududumila, unu unoghile, ghumoyo ghwa uluso, kutogholighwa, uhole, na ghamatunda ghangi ighomnoghela Imulungu ne iwanu wangi. Imunu yane ghumoyo ghuno kakuwa putila lya kweli; kakweleka ghamatunda mna mtsabibu wa kweli, mtsabibu awo iyo Yesu Kirisitu, Mtwatsa wetu. Ichinu ichidaha kumtenda imunu yeleke ghamatunda, iyo ukukala mghati mwa Kirisitu,

na Kirisitu yakale mghati mwako. (Yohana 15:1-10). Kuya kosighala ne Imbuli inoghile ye Imulungu mna ghumoyo ghwake kwaapfila komemesighwa na kubatitsighwa na Ghumuhe Mwenzeluka yane ingupfu ya kuuhuma lukuli ne ukusulukila kwake. Kwa ngupfu tsa Ghumuhe Mwenzeluka kodaha ukula mne Ghumuhe. Ng'okala keli kwa apfila pfayakona au kuhulika, ila kokala tseghamba kwaapfila komtoghola Yesu Kirisitu. Kokala kwa lolelo lya ukutsa kwake Mtwatsa wetu Yesu Kirisitu. Kokala kwa unoghelo we Imulungu matsuwa ghose.

Wabweda awala wane imimoyo inoghile kwaapfila watsomwona Imulungu. (Matayo 5:8). Hata ka mndewa Daudi tsakana mali nyingi na tsakawahuma wanebe tsake, tsakamboma Goliati ne iwanu wangi, lekeni tsakabama chinu chimwe chikulu.

Kwa ghumoyo ghwake tsakalila, "Imulungu unitendele ghumoyo ghunoghile, ughutende keli muhe iukalile tulu mghati mwangu." (Zaburi 51:10). Kuduhu munu iyodaha kughutenda ghumoyo ghwake ghunoghe wala kughutenda ghumoyo ghwake ghuwe ghwa sambu. Imunu kobamighwa yamtsile Imulungu kwa wenyepfale na yaleke nzambi tsake ka pfayatendile Mndewa

Daudi. Kobamighwa yawe ka imwana yaghile, iyawalekile wangubi no ukuya kwa aba wake no ukulonga, "Aba, nitotsa kuchanya kulanga na hambele hako." Imulungu komwapfila imunu yane nzambi iyakutsa kwa uwenyepfale. Imulungu kalonga, "Nani nitsokwing'a ghumoyo ghwa sambi, Nitsakwika Ghumuhe ghwa sambi mghati mwako. Nitsoghulapfa ghumoyo ighukalile ka libwe mghati mwako, Nitsakwika Ghumuhe ghwa sambi mghati mwako ili ughawinze malaghitso ghangu." (Halino lilyo laghano lya sambi lyatendile Imulungu na kulighela chitango kwa mlopa wa mwanaghe Yesu Kirisitu.

Mna ipicha ino ya sano twakona malaika we Imulungu tsakalawila keli, na kuwapfila awala iwatsouhala undewa wa ghamatsuwa ghose. Pfipfila kowatsungulukila awala iwompfuka Imtwatsa. (Zaburi 34:7; 91:11; Danieli 6:22; Matayo 2:13,19; 18:10; Matendo 5:19; 12:7-10). Pfipfila setani kakoneka mne ipicha ino, kema habehi na ghumoyo, kobama nyafwasi yoye keli hanu hake hang'ali hokalagha mwande. Apfo twolongelighwa, "Mwalangitse na mkale meso mana setani yomghalilani maghomba, koduma ka simba, kotsunguluka akuno na akuno kobama iwanu yawametse." (1 Petiri 5:8).

Mpingeni setani, naye katsotsuma, (Yakubu 4:7).

Copyright ANGP

6. IPICHA YA SITA



Ipicha ino iighela usungu iyo ipicha ye imunu iyakuya kuchughu. Inenge yake imwe ifing'ilitsa.

Yolangusa imunu yuno kakwandusa kupfegha na kusinzila mna ughima wake wa chikirisitu. Inenge yake ingi kwa chinyala yolola chila hanu ili yaghetse kuinoghela iisi. Ghumwanga ighuli mghati mwake ghwandusa kutsimika. Ng'obama keli kudununzighwa hamwe na Kirisitu. Lelo kamne ghamaghetso na kandusa kughatoghola kubita kumpinga setani. Kosaghula kumtegheletsa setani kubita kumtegheletsa Imulungu. Hata ka yang'ali yoghenda kune imitingano ye iwanu we Imulungu na koghetsa ukwipfisa ka koinoghela iisi ili mmoyo mwake, lelo koleghela na komleka Imulungu. Kaghitsa unoghelo wake wa mwanduso kwe Imulungu. Inondo ili mmoyo mwake yotsimika na ghumsalaba ghuwa mtsigho mtsito kuna yeye. Inoghola yake yakwandusa kuwa ndodo na koleka kumghendela habehi Imulungu mna ukulomba. Kawa mdebwe na komwing'a setani nyafwasi.

Chideghe Tausi kobana nyafwasi ye ukwingilila. Imunu yoile kuchughu kakwandusa kwichoda na kubama nzila ingi. Kosemwa ka tsakakombolighwa kwa libatsi lilieka. Ukusulukila ukung'wa imbwali kobama kukala mghati wake, kodaha kung'wa kwa mala lumwe, ka

ang'elongotsa na sale tsake wehile, naye kakona chinyala wayaghe wodaha kumwona ka kahela ngufu. Lamda kobama kundeng'elela utani wihile na kulola keli na keli tsipicha tsihile. Pfipfila kodeng'elela kwilongotsa kughenda mna tsingona na mna lusona lwhile kubigha, na kakwingitsa mbuli tsihile mna ghumoyo ghwake, nawo womlongela ghweghwe kwa imunu, na kutenda nzambi imwe si chinu chikulu bae.

Nolongetsa ghendo, ng'atudaha bae kwaapfila ka pfideghe wehile wa kubagho, mawatso ghehile ghoghuluka mwitwi mwetu, lekeni twototsa tung'aghaleka ghatulongotse na ghatsenge pfibali mna mimoyo yetu, na kweleka aghala ghehile ghake. Tung'amleka Setani yaghoghe chidole chidodo, yeye katsoughogha ghendo ghumoko wose. Naye kokwegha ghumoyo na muhe pfingile kutsimu. Apfo choyobama ghendo Imulungu kutukanya tuleke kusulukila kula kowosulukila iwasongolo. Na tuleke kudawala ne nzambi, hata ing'atsa pfii. Utsumile kwa Yesu, yeye Yesu kokukinga na kokulolesa .

Imunu iyakoneka mne ipicha iyohoma ghumoyo kwe mmaghe, keghale ne iwanu wala iwobetsa na iwolema Ukiristo. Kwa milimi yawo ya

ughutsu na milomo yawo ya kubetsa, wowalonga pfihiile Wakiristo, apfo woihoma na kuilagha mimoyo ya Wakiristo, na mkiristu yuno ng'okala bae mna Ukiristo.

Kakwanza kuwapfuka iwanu na si kumpfuka keli Imulungu, na kwa kuwapfuka iwanu kwa achila chowolonga na kutenda, kakuwa mtumwa we iwanu awo, apfo kokala kutali ne Imulungu. Imaya na ukwihila pfakoneka mna matsuwa ghala gha ukughaya na matsuwa aghala gho ukuya kuchughu, napfo pfitsonanahila kwingila mghati. Ayo lelo iyengile mghati iyo nzoka yane chepfu, iyowonela chepfu iwanu iwobweda kwa chila chinu na wane tsimali.

Pfibewe ghendo twetwe mimoyo yetu kunoghela tsendi ka ng'atukinda bae laghitso lila lyayatwing'ile Yesu iyali Imtwasa wetu hala hayatulonge, "Mkale meso mlombe mleke kwingila mna ukughetsighwa." (Matt. 26:41). "Munu wowose iyoghamba kema pfinoghile yalangitse ghendo yaleke kughwa." (1 Co. 10:12). Tufale siraha tsose tsayatwing'a Imulungu, ili tudahe kwima pfinoghile na kutsipinga mbuli tsihile tsa Setani.

7. IPICHA YA SABA



7

Ipicha ino yolangusa ghumoyo ghwe imunu yohile kuchughu pfauli, tsakakala mna ghumwanga ghwe Imulungu na kalanza ghumta we Imulungu pfauli, naye tsakabokela Ghumuhe Mwenzeluka, lekeni kaleka ukumtoghola Kiristo. (Heb. 6:4). Pfipfila ipicha ino yolangusa imunu yula ng'ana yaleke nzambi bae au ng'ana yamwing'e bae Imulungu ughima wake, hata ka tsakahulika Imbuli inoghile ipetighwa kuna yeye na kaghubulighwa mnenge mwake. Imunu yula iyali msughu iyoleka kumtegheletsa Imulungu hayolonga naye katsakuwa keha ghendo hata ka ketenda mwenyegho yoneke kanogha.

Yesu mwenyegho tsakamlonga imunu iyohile kuchughu pfayali, hala hayalongile pfino, "Ichinyamkela hayomlawwa imunu, koghenda mne isi iisakale kobama hanu hokubwihila. Ka ng'apatile bae hanu hokubwihila, kelongetsa imwenyegho, 'Nitsakuya keli mne ing'anda yangu yaniilekile.' Apfo kakuya keli na kuipfika ing'anda yake iseyighwa pfinoghile. Kuya koghenda na kuwasola ipfinyamkela wangi saba wane ngupfu kubita yeye. Nawo wakutsa na kukala mghati mwe imunu hayo. Na ughima we imunuyo wakuwa wiha kubita hala mwanduso." (Luke 11:24-26). "Kuna wawo ighwa kweli imbuli

ilongile, 'Yumbwa koyila keli chiyadekile,' ne 'Ingubi iyopfughighwe koya keli kughalauka mne likododo.' " (2 Peter 2:22).

Tsipicha sino tsotulongela imunu yohile kuchughu pfayali na ghumoyo ghwe imunu iyolema kuleka nzambi pfauli, nzambi mna ghehile ghake ghose itsa keli kukala na kulongotsa ghumoyo ghwake. Hata chihanga chake cholangusa ghumoyo ghwake pfauli, Ghumuhe Mwenzeluka wowingighwa ulawe kunze, ka pfotumanya ghendo nzambi na Ghumuhe Mwenzeluka ng'apfikala hamwe bae. Ghumoyo ng'aghudaha bae kuwa ng'anda ya Imulungu aku keli ghuwe mango ye ukwifisa yehile. Malaika, iyali Imbuli ye Imulungu naye kolawa kwa usungu mkulu aku kolola kuchughu, kololela ka imunu ayo katsotoghola nzambi tsake na kutsileka ka pfayatendile imwana yaghile. Imwana ayo yaghile tsakona usungu mmoyo mwake hayakalile kakuja ichijo ichilekighwe ne iwangubi, wala kuduho imunu iyamwing'ile chinu chochose cho ukuja. Baho katanga ka katenda nzambi na tsakelongela mwenyegho, "Nitsakwinuka na kughenda kwa aba wangu na kumlongela, Aba wangu nimtendela nzambi Imulungu na pfipfila nikutendela ghweghwe, sibamighwa bae

nikemighwe keli imwanagho.” (Luke 15:16-20). Naye aba wake kwa kumlola mwanaghe yane usungu, kamleghutsila matotso ghake na kambokela mwanaghe kwa kudeng'elela sideke na kamchinjila ng'ombe, kamtendela chihungo.

Ghumoyo uli mne ipicha ino wolangusa ghendo ka imunu yuno ngotoghola bae kuleka tsambi tsake, kwa kulonga kweli yeye ng'obama bae yelamlitse na Yesu. Ghumoyo ghwake ghulakala ne ghumoto, na ghufa ghendo. Ghamaghutwi kanagho, lekeni ng'ohulika bae choyolonga Imulungu. Tsinenge kenatso lekeni ng'olyona bae lisimo lye kutsimu ilighendese hasi ilili mmaghulu mwake. Ng'akona chinyala bae kughendendelela kutenda tsinzambi. Setani katsa kuulongotsa ghumoyo wake na kakala ka mndewa mne chighoda chake, imunu yuno kodaha ghendo kwitunya ka kanogha kwa kunze, kokinda idini lekeni keghala na ghamakabuli ighabakighwe utselu, kunze ghakoneka ghanogha kumbe mghati ghamema mipate ye wanu iwafile. (Matt. 23:37).

Aba we ughutsu kakala hanu haukala Ghumuhe wa kweli. Chila mnyama na chila nzambi ina chinyamkela wake wa kuiyapfila kughulongotsa ghumoyo. Setani na pfinyamkela wose awo

wokala mna ghumoyo ghwake. Hata ka imunu kobama yabwihile kulongotsighwa nawo iwoudununza ghumoyo wake, ng'odaha bae kwaapfila kawa mtumwa wao. Imunu iyaghabetsile ghamalaghitso gha Musa, kokomighwa bila libatsi ka kuna wakalangama wabili au wadatu. Lelo mkonatse, imunu iyambetsile Imwana we Imulungu na kuubetsa mlopa we laghano lye Imulungu iumdeghese, imunu iyomligha Ghumuhe we Imulungu, kobamighwa kuhighighwatse? (Hebr. 10:28-29; 2 Peter 2:1-14).

Pfii ipicha ino yoghulonga ghumoyo ghwako pfauli? Sale yangu mlilile Imulungu bila kukawa, kwaapfila Yeye kodaha, sambu na ghamatsuwa ghose kuwakombola awala wose iwomghendela Imulungu kubitila Yeye, (Heb. 7:25) naye kodaha na kobama ghendo kuleghusa nzambi tsose tse iwanu, utoghole kuleka nzambi tsose kwa kulongesa ghendo. Yeye kodaha ghendo kuwaghoma Seteni na pfinyamkela waleke kwingila mna ghumoyo ghwako na kodaha kuwawinga walawe mna ghumoyo ghwako. Mghedele ka Imunu iyoghula ukoma pfayamghendele Yesu. Kamtowela ghamaghoti, kamlomba, kalonga, "Ka kwobama, kwodaha

kunitenda nideghete.” Yesu kamwonela libatsi imunu ayo, kagholosa ghumoko ghwake, kamkinda. Kuya Yesu kalonga, “Nobama, udeghete.” (Mark 1:40-43). Leken i ung'aghendelela kuwa msughu na ka kwonoghela ichisi kubita ghumwanga nolonga kwahela chakulolela au chinu ichikwafila, kwaapfila kosaghula lifwa na si ughima bae, ka Ghamandiko

Maenzeluka pfogholonga, 'Ghamaliho ghe nzambi lifwa.'

Copyright ANGP

8. IPICHA YA NANE



*Ghamatendo ghe soyoka tse nzambi ghomanyika
ghendo; utsinzi, wihi, uweghe, kutamanila*

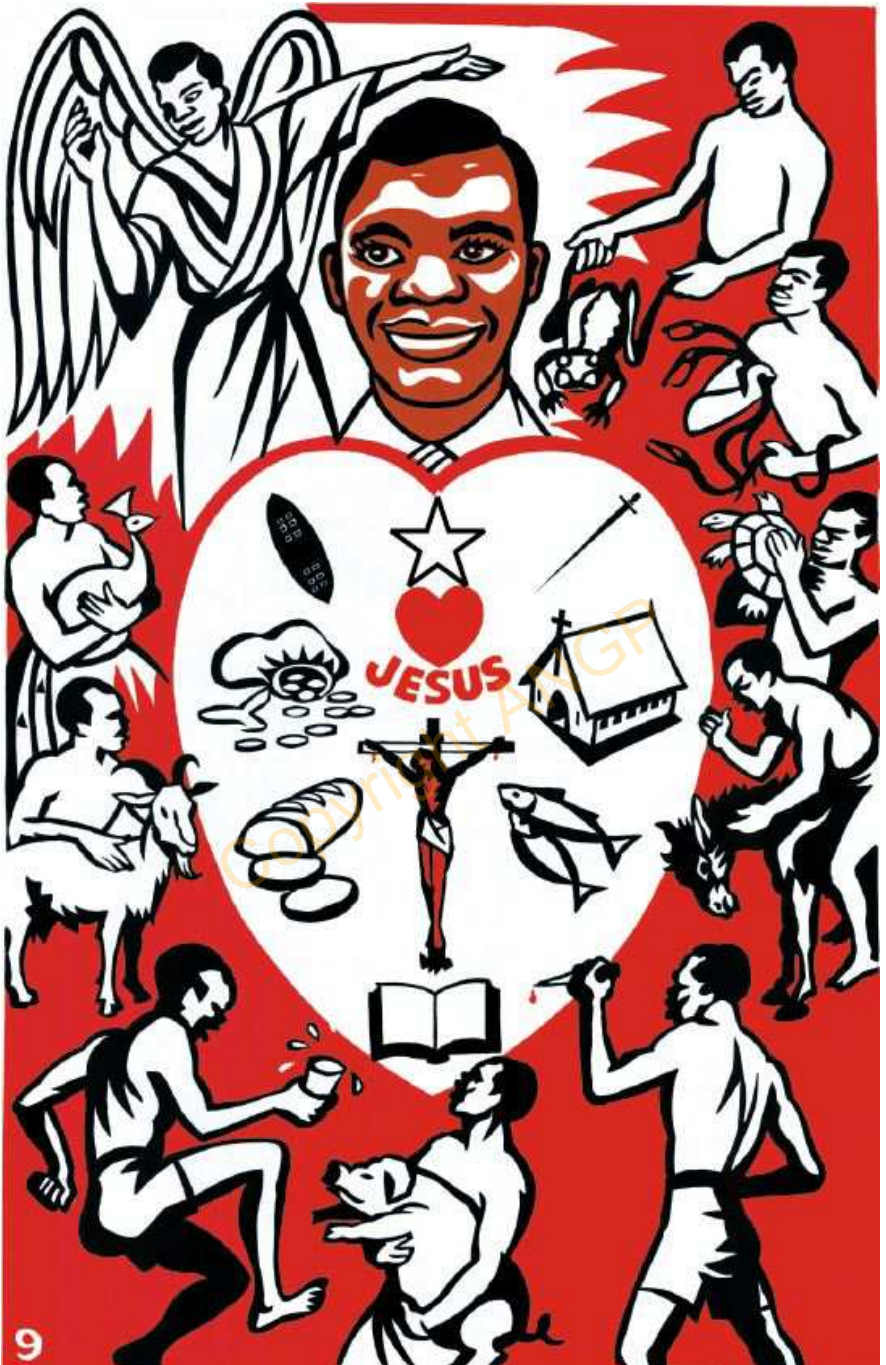
pfinyagho, uhawi, unebe, ughobo, chepfu, maya, ubwa, fitina, uchongetsi, husuda, ukupatika, soyoka na ipfinu pfimwenga ipfighala na apfo. Gal. 5:19-21.

Ahano lelo twomwona imunu msughu yane nzambi iyalekile kumuwinza Yesu, ayuno kahabehi kwingila mlifa, lukuli lwake lumema usungu na ghumoyo ghwake ghumema uwogha we kufa. Usungu mkulu wo ukwingila jehanami wakoneka ghendo kuna yeye, hata ka kobama ghendo kulomba lekeni ng'odaha bae kulonga ne Imulungu kwaapfila tsakaulema unogheleo wake kwa ghamatsuwa mengi. Sale tsake wopfuka kwima habehi yake, na mbuli tsawo tsa ubotsi tsokumkanza ng'atsidaha bae kumwafila. Mali tsake ngatsidaha bae kumwongetsela ghamatsuwa gho ukukala au kuukombola ghumoyo ghwake au kuuhungutsila usungu ghumoyo ghwake.

Kakona ng'aidahika bae kumwalangula Imulungu kwaapfila setani ng'omleka bae yatende apfo. Chila chinu chayanoghele muisi muno sambi chombetsa, na hata pfilongotsi wake we ughutsu sambi ng'awodaha bae kumwapfila kwaafila kaulema unoghelo we Imulungu, na kombeta Imulungu yamhighe. Sambu komanya ghendo ka

imunu kughwa kulawa mna ghamoko ghe Imulungu, chinu cho ukughela wogha ghendo. Tsakalolela ghendo kumwing'a Imulungu ughima wake hala hayobama yeye imwenyegho, au hala hayatsakufa, lekeni sambu kakona kakawa ghendo. Iwanu wengi wakufa kwa ukwidukitsa bila ya kwing'ighwa inyafwasi ya kumbama Imulungu tanu. Apfo twolongelighwa tumbame Imulungu hala hayang'ali habehi. Badala ya kuhulika mbuli itsikombola tse Imulungu, imunu yuno yane nzambi iyakufa, iyalemi kuleka nzambi na iyalemi unoghelo we Imulungu mna ghamatsuwa ghake gha ughima, sambu kololela yahulike litsi lya mlamutsi wake, iliwalongela awala iwali mne ubali wake wa kumoso, "Laweni hana nene, imlightighwe, mghende kune ghumoto ghwa ghamatsuwa ghose, ghuwikighwe kwaajili ya Setani ne iwatumiwa wake." (Matt. 25:41). "Chila munu kwawekelighwa kufa mala lumwe, na ang'afa, baho kohighwa ne Imulungu." (Heb. 9:27).

9. IPICHA YA TISA



Ipicha ino yotulangusa Mkiristu iyoghendelela kutoghola na hata hayoghetsighwa na setani

yeye kakwima pfinoghile na ng'akuya kuchughu bae, na kuhuma ako kolawa kwa Yesu Kiristu. Ng'engile bae mna kuutsumilila chikiristo kulieka bae, ila koghendelela mna ukutsuma ako na komanya choyotenda choni, aku nenge tsake tsomlola Yesu, mna Yesu ukutoghola kwetu kwakima kulawa mwanduso mbaka kuusighilo. (Heb. 12:1,2).

Setani na pfinyamkela wake wose woutsunguluka ghumoyo ighutoghola, wobama kumlongotsa imwana we Imulungu mna nzila tsihile, lekeni ng'awodaha bae. Ukwighoda na ukunoghela tsisendi na ughoni pfose pfomtsila habehi.

Hanu hayakalile chui mwanduso lelo twomwona ipunda, kwaapfila inzambi yotutsilagha twetwe kwa nzila ingi na yefisa na kwikema chinu chingi au kwikema taghwa lingi. Lekeni Mkiristu iyakwalangitsa komanya inzambi yake hata ka ing'atsa kwa nzila ya dini, au malaiaka ghwe ghumwanga. Mkiristu ayu komanya apfo kubitila Immbuli ye Imulungu na Ghumuhe Mwenzeluka komlongotsa mna nzila ya kweli. Imunu iyakindile chikombe che mbwali mna ghumoko ghumwe kobigha habehi na Mkiristu ili yamghetse na tsianasa tse iisi, lekeni kwa Mkiristu yalafighwe kwe Imulungu,

ng'okweghighwa bae na pfinu pfe iisi ipfikoneka pfinogha, kwaapfila tsakafa hamwe na Kiristo na ng'otsinoghela bae nzambi na anasa tsose tse iisi. Imunu wa keli komhoma kwa limaghe Mkiristu iyemile mna ukumtohola Yesu. Maligho na ung'enye na ukubetsa kowolonga iwanu iwolema kumtoghola Yesu, wouhoma ghendo ghumoyo ghwe imunu iyotoghola ghendo. Leken yeye ng'otegheletsa bae chowolonga iwanu, yeye kakwalangula achila choyolonga Imulungu, na kokumbuka achila chayalongile Yesu hala hayalongile "Mbweda mwemwe hamlighighwa ne iwanu na kudununzighwa na kulongighwa pfihile kwa ughutsu, kwaapfila mwemwe mwa iwanang'ina wangu. Mdeng'e na kudeng'elela kwaapfila ghweko lyenu kulu likighwa kulanga, apfi pfipfo iwatulandau wa ghumwande we Imulungu pfawadununzike hala ng'ana mwemwe mwelelighwe. (Matt 5:11,12).

Setani, hamwe ne nzambi na lukuli LWENYEGHO chila litsuwa pfobama ghendo kuwabaghula Wakiristo walawe hane unoghelo we Imulungu, lekeni kwa ayula Mkiristo iyodudumila na iyalihela wogha kodaha kulonga pfino, "Yuhi lelo yatsotubaghula kulawa mna unoghelo wa Kiristo? Angu choni, maghayo,

ukughanzika au ukudununzika au inzala au ukukala chidako au hatari au ukukomighwa?" (Rom. 8:35). "Bae, mna ghano ghose twetwe tuhuma ghendo kubitila yeye iyotunoghela." (Rom. 8:37). Kwa ukukinda pfinu pfe ng'ondo pfe Imulungu, Mkiristu kodaha kuulema ughutsu wa Setani hala ghamatsuwa ghehile aghakutsa, na komanya ghendo ka Kiristo iyokala mmoyo kana ngufu kubita Setani, naye Kiristo tsakahuma hala hayaghetsighwe, na twetwe pfipfila tutsohuma kubitila yeye na tutsokubokela litaji ing'alihinyika bae.

Inondo iilangatsa mna ghumoyo mwake yakoneka mwatsi na yong'ala. Ghumoyo ghwake ghumema ukutoghola na ghumema Ghumuhe Mwenzeluka. Malaika, iyakwima ka Imbuli ye Imulungu, komkumbusa ipfinu pfawekelighwe iwanu wala iwohuma kwa ukukala kwa kumtoghola Kiristo mbaka hane utsighilo. Kwa awala iwohuma nitsowaleka waje ghamatunda gha ghumbiki ghune ughima ighuli mna likonde Iya Edeni. "Kwa awala iwohuma, lifwa lyakeli ng'alitsowapata bae, kwa awala iwohuma nitsoweng'a mana iipfisike na chila yumwe pfipfila nitsomwing'a libwe tselu ilyandikighwe taghwa lingi," "kwa awala iwohuma, iwoghendendela kutenda achila

chonibama, nitsoweng'a ukulu uhula yaniubokela kulawa kwa aba wangu." "Kwa awala iwohuma watsofatsighwa magwanda matselu na nitsoghabaghutsa mna ichitabu cha ughima na aku aba wangu na watumwa wake kulanga wabaho, nitsolonga mwatsi ghendo ka wao wakwangu."

Ghumkoba ghwa tsendi ighuli mwatsi wolagutsa ghendo si ghumoyo ghwake ghulieka bae, hata sendi tsake tsilafighwa kwe Imulungu. Ng'akwaghitsa bae sendi tsake kwa kutendela nzambi, ila koweng'a iwahingwa na komlapfila Imulungu lifungu lya kumi mna pfose pfayopata na hata kulafa chila chinu kwa kumtunya Imulungu.

Ichighate ne isomba pfolangusa ghendo yeye pfoyokala pfinoghile na kwa kwilongotsa mwenyegho, ng'oluhinya bae lukuli lwake iluli ing'anda ye Imulungu kwa kung'wa mbwali wala kuja pfijo pfihile. Ng'akwaghitsa bae sendi tsake kukweghela gotso au kudafuna litumbaku, lekeni kakuja chijo choyoghuta na ichinoghile na ichimtenda yanoghe. Ghumoyo ghwake ghwose ghuwa ing'anda ye ukulombela. Ng'alekagha bae kughenda kutingana ne iwanu we Imulungu, kolombagha hamwe nawo, pfipfila kolombagha

ne iwanu wa ukaye mwake, na hata ang'awa kayeka kolomba kwaapfila yeye komanya ghendo ka Mkiristu ng'odaha bae ukukula bila ukulonga ne Imulungu mna ukulomba.

Ichitabu ichifughuke cholangusa Ibibia ka chitabu chifughuke kuna yeye, kochisoma na kuchipfikitsa chila litsuwa, Ibibia tala ya ghamaghulu ghake na chiheleto (siraha) ye ukumtowela Setani. Na Ibibia iwa ichijo che muhe wake na iwa ghamatsi gha ukumalitsa ikiu yake na Ibibia iwa ghamatsi ghake gho ukogha, kuya iwa chiyoo che kwilolesela kuna yeye.

Yeye konoghela ghendo kughusola ghumsalaba wake, kwaapfila komanya ghendo ka kuduhu ghumsalaba, kuduhu kugwekighwa, na komanya ghendo ka Kiristo katsilihuka hamwe na yeye ili yadahe kukala mna ughima ungi, kawika ghumoyo ghwake wose mna pfinu pfa kulanga, kololesa pfinu ipfili kuko na ng'olola bae ipfinu ipfili muisi (Col. 3:1-2). Keyandaa ghendo kutingana ne Imulungu na keghala na ghumbiki ighukula mmbalimbali mwe ghumto, ighukweleka ghamatunda mna ghumsimu ghunoghile. (Tsab. 1:3) Keghala na putila lye mnzabibu ilikweleka nzabibu nyingi. Ngomanya bae ukupfuka ukufa, kwaapfila unoghelo we Imulungu iyaubokele

kulawa kwe Ghumuhe Mwenzeluka ghumema mna
ghumoyo ghwake.

Copyright ANGP

10. IPICHA YA KUMI



Yesu tsakalonga, "Nene nautsilihuko ne ughima.
Imunu iyonoghola nene ang'afa bae, katsokuwa

mghima, na imunu wowose iyokala na kunitoghola nene ng'atsokufa bae ghamatsuwa ghose." "Nowalongela ghendo, imunu wowose iyohulika mbuli yangu na kumtoghola ayula iyanitumile ka kana ughima wa ghamatsuwa ghose, munu ayo ng'atsohighighwa kwaapfila kaloka lifwa kengila mne ughima. "Lifwa lihinyighwa, ukuhuma kutimila!" Ghwe lifwa kulikwani ukuhuma kwako? Ghwe lifwa ulikwani usungu wako? Lekeni mighede kwe Imulungu iyotutenda tuhume kubitila Imtwa wetu Yesu Kiristo. (1 Co. 15:54-57).

Imunu iyomnoghela Imulungu ng'opfuka lifwa bae, na ghamatsuwa ghake gho ukufa haghopfika yeye kodeng'elela ka imtumighwa Pauli pfayolonga "Nosulukila ndeke ughima uno, ng'ende ng'akale na Kiristo, kwaapfila apfi pfinogha ng'ani." (Phl. 1:23). Mkiristu yanoghile kobama ghendo ukona chihanga cha Yesu, iyafile kwaajili yake na iyalihile maliho gha nzambi tsake mna ghumsalaba. Ghumuhe Mwezeluka komkumbusa aghala ghayalongile Yesu, "Mleke kughanzika mne mimoyo yenu, mtogholeni Imulungu, pfipfila mnitoghole na nene. Mng'anda mwa aba wangu kuna pfiheleto pfingi. Ning'aghenda, noghenda kuwaandalilani

hanu henu, nitsowoyilani na kuwasola ili hala hanikala nene namwe mkale baho. (Yoh. 14:1-4). "Kuduhu inenge yonile, kuduhu lighutwi ilihulike, kuduhu tsimbutsi itsimanyile ipfinu pfayawekele Imulungu awala iwomnoghela." Kuduhu ilugha ili muisi iyodaha imunu kuitumila kulonga ako kulanga kwawekilighwe awala iwomwihinza Yesu pfakunoghile.

Mne ipicha ino ya kumi twolangusighwa pfayakuka imunu iyamtoghole Yesu mbaka tsuwa lya kufa kwake. Badala ya aba wa lifwa, malaika we Imulungu kakoneka mna ipicha ino. Yeye kobetssa kuughala muhe unoghile uye kwe Imulungu. Muhe wolekelighwa kulawa mna lukuli ilukola, na wogheluka kuchanya kubitila mna ilibani ilili kulanga, wogheda kwa Yesu iyomnoghela na iyamfile mna umsalaba kwaajili yake. Ako Imulungu kombetetsa kwa kudeng'elela, naye kolongelighwa pfinu ne Imtwasa wake iyali kulanga, 'Kutenda ghoya, mtumwa yunoghile, na mwenyepfale. Utse udeng'elele ne Imtwasa wako!' (Matei 25:21). Setani kahela ngupfu keli bae kuna yeye, kwaapfila lifwa lye imunu iyomnoghela Imulungu linogha kwe Imulungu (Tsab 116:15). Ambe Lasaro tsakafa na kasolighwa ne malaika mbaka

mmambagha mwa Aburahamu. (Luka 16:22). Kuya tsanihulika litsi kulawa kulanga lyonlonga, wandike, "Wabweda awala iwakufa sambu na kughendelela aku welunga ne Imtwatsa Yesu. Ona, Ghumuhe kolonga, wabwihile kulawa mmghayo mwao, kwaapfila ghawatendile ghowawinza." (Ughub 14:13).

Miyangu yusoma chitabu chino, Imulungu yakwapfile umwing'e ghumoyo ghwako Yesu iyokunoghela. Yeye kolonga naghwe sambu, "Umbuyile nene kwa ghumoyo ghwako ghwose." Umwing'e Yesu maghayo ghako na ghumoyo ghwako ghwapfile na ighuyile kuchughu na ighutama. Yeye katsokwing'a ghumoyo ghungi. Uleke kughuleka ghumoyo wako ghwihile ukughutsukile na kughawinza aghala ghoubama. Kwaapfila, "Mna ghumoyo ghwe imunu tsolawa mbuli tsihile itsimlongotsa yatende ghehile. (Mark 7:21). Kwaapfila maliho ghe nzambi lifwa, lekeni ghweko lye Imulungu ughima wa ghamatsuwa ghose uli mghati mwa Yesu Kiristo, Imtwatsa wetu.

Naghwe yuulapfile ughima ghwako kwe Imulungu, tsikindise mbuli tsila tsa ughima

tsanikulangulitse, usighale mne inoghola na unoghelo iuli mne ukwilunga na Kiristo Yesu. Kwaajili ya mbuli ayo nene nodununzika apfi, lekeni sikona chinyala bae, kwaapfila nommanya ayula yanimtoghola, kuya notoghola ghendo yeye kodaha kuchilolesa achila chayangaile mbaka litsuwa lila. Apfo ukutoghola kwako kukale kwe Imulungu, ulombe mne ngufu ye Ghumuhe Mwezeluka, wiyike mwenyegho mne unoghelo we Imulungu, kuno nenge tsako tsomlola Yesu, iyali nzila na kweli na ughima, yeye ka Imtwatsa wetu, katsakusa kuwasola wanaghe. Kuna yeye iyodaha kuwapfila mleke kughwa na awaghale hambele hake mlihela nzambi na kudeng'elela ng'ani, kwa Imulungu yaliyeka Mkombotsi wetu utunitso, ukulu, ngupfu ne udaha, kwa kubitila Yesu Kiristo Imtwa wetu, ghumwande na ghumwande, leloli na ghamatsuwa ghose. Amina (Yuda 24,25).

*Tughende hambele kwa taghwa lyake
Hata hatsakutsa Mkombotsi yule,
Katsotubokela kwake,
Tutawale naye ghamatsuwa ghose.*

*Twinule tsilitsi tsetu
Kumtunya Mkombola yula,
Ili iwanu wose wamanye*

*Ukombotsi una yeye ghamatsuwa ghose,
Utsume lelo, Twibone ghamatsuwa ghose,
Twibone bandarini kula.*

Copyright ANGP

A SPECIAL WORD FROM ANGP
UN MONDE SPÉCIAL DE L'ANGP
UMA PALAVRA ESPECIAL DA ANGP

This booklet "The Heart of Man" is available in over 538 languages and dialects spoken throughout the world (Africa, Asia, The Far East, South America, Europe, etc.) Our Heart Book is now also available on cell phones, tablets, etc from www.angp-hb.co.za or as an APP "Heart of Man" on Android phones.

Le livre du "Coeur de l'homme" peut être obtenu en plus de 538 langues et dialectes parlés dans le monde entier, à savoir: Afrique, Amérique, Asie, Extrême Orient, Europe. Notre Livre du Coeur est maintenant aussi disponible sur votre Téléphone cellulaire, tablettes, etc. de www.angp-hb.co.za ou comme une Application "Heart of Man" sur téléphones Android.

Este livro "O Coracao do Homem" é obtido em mais de 538 linguas e dialectos falados em todo o mundo, a saber: (Africa, Asia, America do Sul, Extremo Oriente, Europa, etc). O nosso Livro O Coração do Homem também está agora disponível em telefone celular, tablets, etc. de www.angp-hb.co.za ou como um aplicativo "Heart of Man" nos telefones celulares Android.



The 10 heart pictures contained in this booklet are also available in the form of large coloured picture charts (86 x 61cm) bound together in a set of 10 pictures. These "Heart Charts" can be obtained with European or African features and are particularly suitable to be used in conjunction with the Heart Book for class-teaching, open air evangelization etc. Kindly contact us to ascertain the latest subsidized price of this chart.

Les 10 images du coeur qui figurent dans ce livre peuvent être obtenues en tableaux de couleur, format 86 x 61 cm, avec des physionomies européennes ou africaines. Ils peuvent être utilisés en même temps que le livre du coeur pour des classes bibliques, à l'école du dimanche ou lors de réunions de plein air. Soyez aimable de nous contacter pour assurer les derniers prix en cours du tableau.

As 10 imagens do coração, contidas neste livro podem ser obtidas num conjunto de 10 imagens em colorido no tamanho de (86 x 61 cm). Estes "Cartazes do Coração podem ser obtidos com características Europeias e Africanas e podem ser usados em conjunção com o mesmo livro em classes de ensino bíblico, evangelização ou ao ar livre. Agradecemos que nos contacte-se para confirmação do último preço dos cartazes.



Kindly write to us if you are able to assist us with further translations of our free Gospel literature, informing us of the language into which you could translate this Gospel literature. Your assistance would be appreciated.

If you have found salvation in Christ, or have been otherwise blessed through our Gospel literature, please let us know. We would like to thank God with you, and remember you further in our prayers.

Nous vous invitons a nous contacter pour faire des arrangements concernant de nouvelles traductions de notre littérature, nous informant de la langue dans laquelle vous pouvez traduire cette littérature évangélique. Votre aide sera beaucoup appréciée.

Si vous avez trouvé le salut en Christ ou si vous avez été béni par notre littérature, nous vous prions de nous le faire savoir. Nous aimerions remercier Dieu avec vous et prier pour vous.

Nos vos convidamos a nos contactar, afim de fazer qualquer arranjo concernente a novas traduções de nossa literatura em outras línguas. Vossa assistência será muito apreciável.

Se tem encontrado a salvação em Cristo, ou se tem sido abençoado por intermédio da nossa literatura evangélica, faça o favor de nos informar. Pois nos gostaríamos de agradecer a Deus juntamente convosco, e lembrá-lo sempre em nossas orações.

For free Gospel literature, books and tracts in over 538 languages, write to:

Pour obtenir gratuitement de la littérature evangelique, des livres et des traites en plus de 538 langues, ecrivez a:

Para obter gratuftamente a literatura evangelica, livros e folhetos em mais de 538 lnguas diferentes escreva para:

www.angp-hb.co.za

info@angp.co.za

ALL NATIONS GOSPEL PUBLISHERS

P.O. Box 2191

PRETORIA

0001

R.S.A.

A Gospel Literature Mission financed by donations

Une Mission de littérature evangelique financee de dons

Missao de literatura Evangelica financiada por donativos

(Reg. No. 1961/001798/08)

The “HEART OF MAN” books can be viewed and downloaded using the following link:

www.angp-hb.co.za