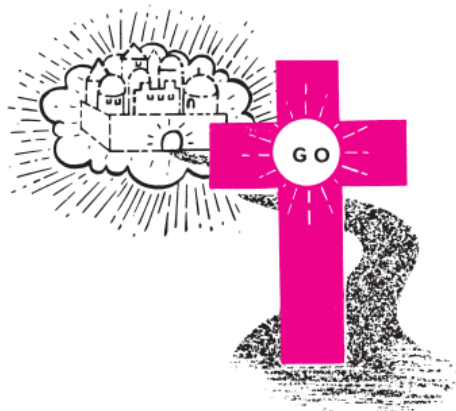


# GOD'S ROBOT

## ROBOT RUT



E jiri kọmputa sugharịa traktị Ozioma a. Ọ bụrụ na ị nwere ike idozi ma ọ bụ melite asụsụ ahụ, biko kpọturu ụlọ ọrụ na [info@angp.co.za](mailto:info@angp.co.za)

A robot bụ a n'ibu ido aka ná ntị ihè nke na-eduzi ndi mmadu di ka ha na-agafe na nnukwu obodo nke ụwa. Ọ na-agwa ndi mmadu mgbe ha nwere ike iga n'ihu, ma dọọ ndi mmadu aka na ntị mgbe ha kwesiri ikwusi.

Chineke n'ime amamihe Ya na ihunanya Ya n'ebe umu mmadu no di mkpa itinye ufodu ihe iriba ama **nkwusi** n'ụwa a. Ọbuna n'ogige Iden ebe Adam na Iv nwere onwe ha na-eri mkpuru osisi ọ bula di n'ubi ma na-enwe ahụ zuru okè nke na mkpakorita nke ha na Onye Okike, Chineke e ugwo na-etinye a **robot** ma ọ bụ a **na-akwusi** ihe iriba ama n'ihu ha. The osisi nke na-enye ihe omuma o f ihe bu ezi na ihe bu ihe ojoo, bu na **nkwusi** iriba ama na-agwa ha ka ha ghara iri mkpuru ya egwu onwu. Jenesis 2: 16-17

Ka oge na-aga, mgbe ihe a kpọrọ mmadụ n'iri elu, Chineke huru na o di mkpa ibawanye akara ngosi **nkwusi** na ime otutu iwu ndi ozo nke nyere ndi mmadu no n' uwa ntuzi aka n'okwu ufodu imara ebe aga aga na ebe ikwusi. Ndi di otu ahụ iwu na-bughi nani nyere mmadu ma na agwa na ihe niile ozo na uwa na eluigwe. Chineke ama etinye **nkwusi** iriba a ama n'ihu dike oké osimiri, mwube a okè na mmiri, na-egbochi ha si ekpuchi uwa ozo. E nwere **nkwusi** iriba ama maka umuaka di ka nke oma di ka ndi okenye, **na-akwusi** ihe iriba ama na-eri nri, na-anu di ka nke oma di ka na-ehi ura, n' ihi na egwu na-akpo na-arụ oru. "N' ihi ya, anya na o dighi ihe ozo" anyi na-gwara site na okike. E nwere **nkwusi** iriba ama na otu ndu na di ndu, na azumahia, na egwuregwu, na ulo mmeputa ihe na, na ulo ogwu, na ulo akwukwo, na agha ndu nakwa na sayensi. Na ria ugwu ma o bu na oké osimiri, na ugboelu nakwa di ka Ngwuputa maka gold miri ala na ogbu nke uwa, anyi na-ezute ndi otutu **nkwusi** iriba ama. Ilegbara ihe iriba ama **nkwusi** ndi a anya nwere ike ikpata odachi jogburu onwe ya ma kpatara oke mbibi.

N'oge ugbu a, anyi niile amatala ihe iriba ama **nkwusitu** okporo uzo . O bu ihe magburu onwe ya ihu ka, ewepu ole na ole, ndi okwo ugboala na-ahụ ihe iriba ama **nkwusi** ndi a . Inupuru ha isi nwere ike buru odachi ma wekwaa ike inara ntaramahuhu siri ike. O buru na ugbo okporo igwe, ugbo mmiri, ma o bu ugboelu eleghara ihe iriba ama **nkwusi** ufodu anya, otutu nari mmadu puru ila n'iyi.

Anyi oge a atom bombs na ndi ozo ka na-ozo na-ebibi bombs na- oge na-achikwa site na ufodu **na-akwusi** ihe iriba ama. Kwesiri o bula n'ime ha site na ufodu mmadu

njehie ma ọ bụ ileghara ike ileghara anya, akụkụ kasi ukwu nke mmadu nwere ike kpochapuru.

Nnukwu ihe iriba ama **nkwusi** kacha mkpa maka nchekwa, mweghachi na nzoputa nke umu mmadu ka a na-etinye na Calvary ihe foro nke nta ka ọ buru puku afo abuo gara aga mgbe Jizos Kraist Okpara Chineke nwuru maka anyi n'elu obe. Ọ bụ ndi kasi di ike robot mgbe enim n'ụwa **stop** mmadu na ụzọ mbibi. "Mmadu nile emehiewo, di anya n'ebe onu Chineke nke nzoputa di" ( Ndi Rom 3:23), ha nile na-aga rue mbibi ebighi ebi. Kemgbe Setan duhiere Adam na Iy, leghaara ihe mgbaàmà mbụ **kwusiri** n'ogige Iden anya, ihe a kporo mmadu ewerewo okporo ụzọ ahụ sara mbara nke mbibi. N'ezie Chineke gbaliri ka a na-akwusi na na ewere ngwa ngwa kwuputa mbibi site etinye elu ozo na ndi ozo **na-akwusi** ihe iriba ama site na ole na ole kwesiri ntukwasi obi na-eso ụzọ, ma ọ bughị ogologo oge tupu ndi **na-akwusi** ihe iriba ama na-eleghara anya, na-agba oso n'elu na zotosia.

N'oge a ufodu oge mgbe **mbibi** gabiga n'ala Ijpt na-egbu akpan ke ọ bula n'ulo nakwa di ka n'etiti anu-ulo, Chineke nyere ha iwu Ya horo ndi mmadu Israel ka elu a **na-akwusi** ihe iriba ama. Onye isi ulo obula aghaghi igbu nwa aturu zuru oke ma fesa obara ya n'awara uzo nke ulo. Opupu 12: 5-7,12. Nke a bu na- **na-akwusi** ihe iriba ama mbibi, edebe ya si na-eweta onwu nke mbu muru nke na n'ulo. Enweghi ulo n'abalị ikpe ikpe ebe ọ na-adighi onye nwuru anwu, beluso ebe akara **nkwusi** nke obara nwa aturu ahụ gbochiri onye mbibi ahụ ibanye. Opupu 12:13. Nwa aturu ahụ enyewo obara ya maka nke mbu, dika Jizos Nwa Aturu Chineke, nyere ndu Ya maka mu na gi. Jon 1:29

Mgbe e mesiri mgbe ndi agha Israel ama gburugburu dike mgbidi Jeriko, Rahab ndi akwuna a gwara ka elu a **na-akwusi** ihe iriba ama site kpogide a eriri uhie na window ulo ya nke e wuru na mgbidi obodo. O kwenyere ma mee omume dika okwukwe ya siri di na Chineke nke Israel ma debe eriri uhie ahụ na windo ahụ. Mgbe mgbidi Jeriko dara, mbibi wee a **nkwusi** na Rehab n'ulo na o na ya ulo na- azoputa. Joshua 2: 18-19, 6:17, 22-23

Onye kasi ukwu na ike kacha ike **nkwusi** iriba ama, obe nke Calvary enye anyi iwu na eluigwe ikike:

**Kwusi** obi gi kpochiri akpochi site n'ekweghi ekwe. Hib. 3:12

**Kwusi** i drinkingu mmanya, ikpo iyi, ikpo iyi, ikwulu aha Chineke, igha ugha na ikpa ochi. Ndi Korosi 3: 8

**Kwusi** niile na nganga, "nke na-abia n'ihu na odida", nke na-eduga mbibi. Mme Nke 16:18

**Kwusi** ibi ndu ruru aru, ikwa iko, nwoke idina nwoke ma o bu ojiji o bula nke ahụ anyi, nke ezubere ibu ulo nsọ nke Chineke di ndu .

**Kwusi** na -eme mmehie abia nke na-anu siga siga ma o bu dagga, snuffing ma o bu ita utaba, na ojiji nke ufodu ogwu ojoo na mbadamba-emeru ahụ mmadu nke bu ulo nsọ Chineke. 1 Ndi Korint 3: 16-17

**Kwusi** iri udi nri niile, ibi ndu iri nri kama iri nri iji bie ndu. Mme Nke 23:21

**Kwusi** niile enweghi mmasi n'ebe Chineke na Alaeze ya, ime mmuo umengwu na-etinye nzoputa anya ozo adaba ubochi nke nwere ike mgbe na-abia. Naani otu nzo ukwu gara aga akara ngosi **nkwusi** nwere ike iputa amamikpe gi ebighi ebi, n'ihia na Okwu Chineke na-ekwu, **taa** o buru na i nu olu m, emela ka obi gi sie ike. Ndi Hibru 3:15

**Kwụsi** na-aga ka uba tellers, ife arụsi, na-atụkwasi na ita amoosu na -agba izu na ndi nwuru anwu kama nke na-akpo na -ebi Chineke. ikpere arụsi na amoosu bu oru nke anu aru ma buru ndi Chineke katoro . Diuteronomi 18: 10-12, Aizaya 8: 19-20

**Kwụsi** niile mkpesa na -atamu ntamu na -ekele Chineke. Ndi Efesos 5:20

**Kwụsi** niile na-agba asiri na nkwuto, ma kama na-ekwu okwu banyere ndi ozo di ka i ga-enwe ha na-ekwu okwu banyere gi. Mme Nke 26: 20-23

**Kwụsi** inye udi ekworo ahụ nri, nke na-ebibi ihe ma nwee ike ibute ikpoasi, igbu ochu na onwu. Matiu 5: 21-22

**Kwụsi** niile na iwe na ikpoasi. Wepu ya n'obi gi riu Chineke ka o nye gi mmuo udo na ihunanya . Ndi Filipai 4: 5-7

**Kwụsi** ihu ego n'anya nke na-emeru obuna umu nwoke kachasi mma. N'ih i na otutu ndi choro ego akwusila itukwasi Chineke obi ma wetaara onwe ha otutu ihe mgbu. Cheta Judas na njedebe ikpeazu ya. 1 Timoti 6:10

**Kwụsi** mmuo icho odimma onwe onye nani, anyaukwu nke na-adighi afo ojuju.

**Kwụsi** ihu abuo niile Jizos kporo asi kari otutu mmehie ndi ozo, ya bu, ime ka i bu ihe i abughi. 1 Pita 2.1

**Kwụsi** itu egwu nke a na itu egwu nke ahụ, kama itukwasi Chineke obi . Jizos kwuru, si, "Atula egwu , kwere." Tukwasi Chineke obi! Aizaya 41:10

**Kwụsi** hu onwe gi na gi na Kraist idi ndu na- ekere okè na ndu ohuu ohuu yana udi mmuo Ya. 2 Pita 1: 3-4

**Kwụsi** hu ihunanya Chineke onye nyere Okpara o muru naani ya ka onye o bula nke kwere na ya wee ghara ila n'iyi kama nwee ndu ebighi ebi. Jon 3:16

**Kwụsi** ikwu okwu ụgha, maka ekwensu n'onwe ya bụ nna ahụ **kwụsirị** ma nakwere Kraist dịka Onye Nzọpụta gi . John nke ụgha niile. Jọn 8:44 10: 9

**Kwụsi** n'obe, robot nke Chineke, ma tugharia ma kwuputa mmehie gi n'ihu Chineke yana ndi i mejoro. "O buru na anyi ekwuputa mmehie anyi nye Chineke, O ga - emezu nkwa Ya ma mee ihe ziri ezi, O ga-agbaghara anyi mmehie anyi ma sachapu anyi ajo omume anyi niile." 1 Jọn 1: 9. "Obara Jizos, bu Okpara Ya, na- asachapu anyi **mmehie niile** ." 1 Jọn 1: 7

**Kwụsi** n'obe ma hu nzoputa nke Onyenwe anyi nke O zutara gi. "N'ih i mmehie anyi, e meruru ya ahụ, tie ya ihe n'ih ihe ojoo anyi mere. A gworo anyi site na ntaramahuhu o tara, mee ka o di mma site na ihe otiti ndi o natara. buru. " Aisaia 53: 5,4. "Kraist enweghi mmehie, mana n'ih i anyi, Chineke mere ka O keta oke na mmehie anyi, ka anyi wee keta oke n'eh i omume nke Chineke n'ime Ya." 2 Ndi Korint 5:21

**Kwụsi** irio ndi mmadu ndumodu mgbe Chineke gwara gi okwu ma mee ka i mara uche Ya.

**Kwụsi** **igba** mbo na- ejere nna ukwu abuo ozi . O ike ike mere. I nweghi ike ijere Chineke na uwa ozi. Luk 16:13

**Kwụsi** ma lee Ya anya Nwa Aturu Chineke nke na-ewepu mmehie nke uwa, mmehie gi na mmehie m. Jọn 1:29

**Kwụsi** ekweghi ekwe niile , tukwasị Chineke obi . Nwee okwukwe na Chineke.

**Kwụsi** itukwasị obi na ikike nke gi ma o bu ichoro ihe ojoo nke oge gara aga. Cheta nwunye Lot. Mme Nke 3: 5

**Kwụsi** iche echiche ojoo ma chee echiche banyere eziokwu, kwesiri nsopuru ma di ocha. Ndi Filipai 4: 8

**Kwụsi** ileghari anya na-atu gi. Lelee Jizos anya.

**Kwụsi** ma guzogide ekwensu n'aha Jizos ma o ga-agbapu n'aka gi. James 4: 7

Nke a eluigwe **nkwusi** iriba ama nke cross bughị naani na-enyere anyi aka inakwere na-ahụ Chineke na- nzoputa uku na onyinye nke ndu ebighi ebi n'ime Kraist Jizos, na o na-eme ka a nsọ na ezi omume Chineke **na-akwusi** mgbe O na-ahụ a mmehie na-atughari si na ya na-ezighi ezi uzọ. Nnyin nte mme anam-idioknkpo ikpehe ikpe Abasi ye ubiom-ikpe ndidu ke nsinsi ke hell. Ma mgbe Chineke na-ahụ ndi di otu ahụ a mmehie na cross O na-akwusi na-ekpughe onwe ya di ka Nwa Aturu nke Chineke onye na-ewe puo na mmehie nke onye o bula, di ka Onye na-agbaghara niile anyi mmehie anyi na gwokwa anyi oria. Kama ibu ndi iwu katoro, anyi na-ahụ amara na ihunanya na udo. Site na cross Chineke na-ahụ anyi nye na ocha site n'obara nke Ya Okpara Jesus Christ. The cross kwuru **nkwusi** ka iwe Chineke nke gaara na-nwere dakwasị anyi. Jizos kpere ekpere, "Gbaghara ha, Nna! Ha amataghi ihe ha na-eme." Luk 23:34.

E wezuga nke a obe bukwa ihe **nkwusi** di ike megide Setan na ike mmuo ojojo niile nke ga-anwa ibibi anyi ma dokpuru anyi na hel. N'ihia na obe na-agbara nnaputa anyi. O na-enyekwa onye na-ebo ebubo ebubo, ekwensu iwu ka o **kwusi** ebubo anyi, n'ihia na site n'onwu ichu aja nke Kraist, anyi nwere onwe anyi, ya bu, a gbagharala anyi mmehie anyi ( Ndi Efesos 1 : 7) na O naghị echeta mmehie anyi kwuputara.

## Gaba

Ma obe abughị naani akara ngosi **nkwusi** . O na-enye anyi iwu ka anyi **jee** . O na-enye anyi akwukwo ndu akwukwo ndu n'ime onuno Ya. Site n'aka Jizos Kraist, na Mmuo Nso anyi nwere ugbu a free ohere na Nna, anyi na Nna onye umu anyi na e

mere site na okwukwe na Jizos Kraist. Kwà-ngepe ahụ adọwara adọwa site n'elu rue na onye ọ bụla chọrọ ịbịa nwere ike ị ,ụ mmiri nke ndụ n'enweghị nsogbu. Jizos kwuru, si: "Abụ m ụzọ, abụ m ọnụ ụzọ." Jọn 10: 9.

**Gaa** gbaghara onye mmehie, site na warara ma meghee mmadụ niile. Mark 16:15 ọnụ ụzọ banye n'eluigwe.

**Gaa** na ikwesị ntụkwasi obi ruo mgbe ị banye n'eluigwe, ebe Jizos agwalarị a n'ụlọ gi, na ga-ghichapụkwa anya niile anya mmiri gi anya. Mkpughe 21: 4

**Je** gwa ndi nke gi ihe ebube a, n'efu. Luk 14:23. nzọputa. Gwa ndi agbata obi gi, ndi enyi gi na kwa ndi iro gi na Jisos nazoputa .

**Gaa** n'ime niile nke ụwa na -ekwusa ozi ọma na Gospel ka ọ bụla onye. Mak 16:15.

**Gaa** ngwa ngwa n'okporo ámá na okporo ụzọ, kpọbata mmadụ niile.

**Gaa** gaa mba ụzọ na Lanes na ime ka ndi mmadụ na-abia, ka ulo Jehova ga- zuru. Luk 14:23

**Gaa** mehie ọzọ .

JR GSCHWEND

*E jiri kọputa sugharịa trakti Ozioma a. Ọ buru na ị nwere ike idozi ma ọ bu melite asusu ahụ, biko kpọturu ụlọ ọrụ na [info@angp.co.za](mailto:info@angp.co.za)*



Ọ bụrụ n'ị chọtala nzọpụta n'ime Kraịst, ma ọ bụ na a goziwo gi n'uzo ọzọ site n'akwụkwọ ozioma anyị, biko mee ka anyị mara. Anyị ga-achọ isoro gi na-ekele Chukwu, ma na-echeta gi ọzọ n'ekpere anyị. Maka akwụkwọ ozioma n'efu, akwụkwọ na trakti n'ihe kariri asusu 540, biko kpọturu anyị :

## OBI MMADU



This Gospel tract was translated with a computer. If you can correct or improve the language, please contact the office at [info@angp.co.za](mailto:info@angp.co.za)

E-MAIL: [info@angp.co.za](mailto:info@angp.co.za)

ALL NATIONS GOSPEL PUBLISHERS

P.O. Box 2191, PRETORIA, 0001, R.S.A.

(A Gospel Literature Mission financed by donations)

(Reg. No. 1961/001798/08)